

160109-1

MODEL: DG180-S

xSender

Wireless Video Sender System

LR150-S




PLEASE KEEP THIS INSTRUCTION MANUAL FOR FUTURE REFERENCE

TABLE OF CONTENTS



1. Introduction	3
2. Unpack Your xSender™	4
3. Install The xSender™ Transmitter	5
4. Install The xSender™ Receiver	7
5. Using the xSender™	8
6. AV Channel Settings	9
7. Troubleshooting: Picture Problems	10
8. Troubleshooting: Audio Problems	12
9. Troubleshooting: Remote Relay Problems	13
10. Technical Support	14
11. Upgrades & Accessories	15
12. Rear Panel Descriptions	16

WARNING
To prevent damage do not
expose this unit to rain or
moisture.

	<p><u>INTERFERENCE WARNING</u></p> <p>This device is liable to receive interference signals generated by Spread Spectrum LAN and stray microwave emissions from some Microwave Ovens. Such interference will cease after the interfering equipment has been switched off.</p>
---	--

INTRODUCTION

Congratulations on purchasing the xSender™. This product represents state of the art wireless video technology and exceptional value for money.

You can now enjoy crisp video and hi-fi stereo sound from your Satellite, Freeview, DVD or VCR in another room in your home.

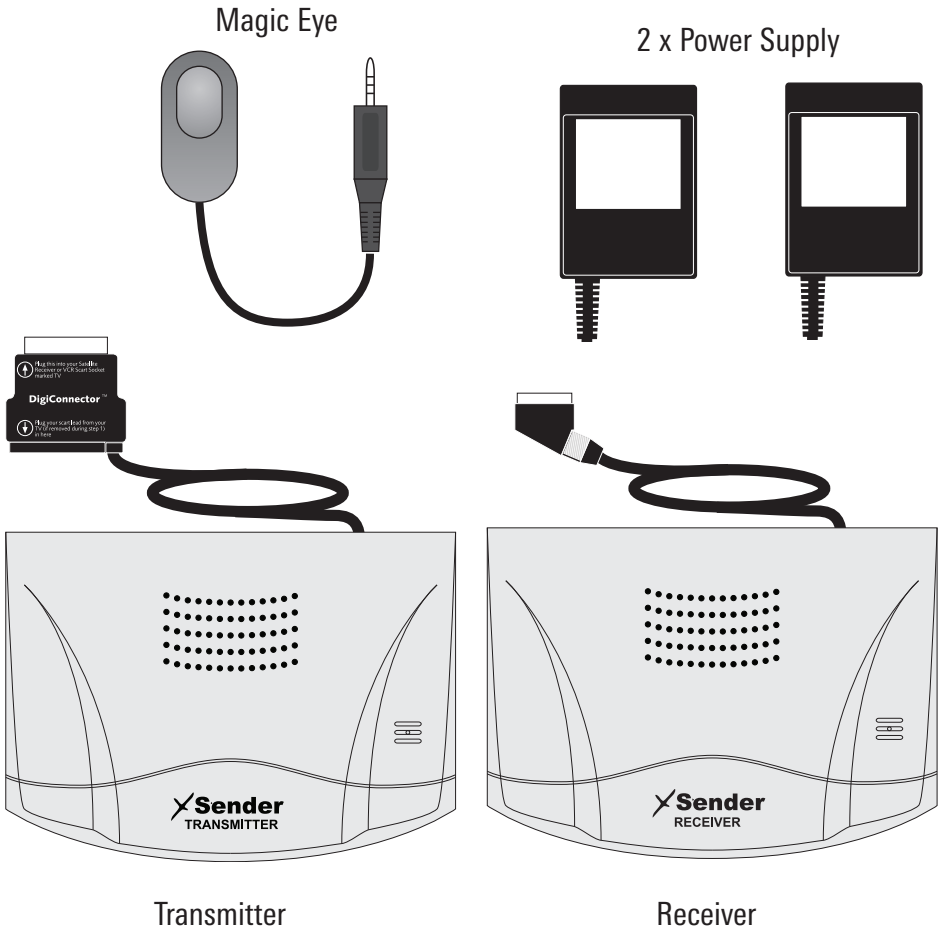
The xSender™ is designed to work with virtually any video source and is an ideal solution for transmitting channels from a typical home entertainment environment.



STEP 1

Unpack your xSender™

All packs are computer weigh checked when packed. However, it is a good idea to check all kit contents are present before proceeding with the installation.



STEP 2

Install the xSender™ Transmitter

The DG180-S Transmitter will send the sound and video from a connected source (Satellite, Freeview, DVD, VCR, etc.) to the DG180-S Receiver, located in another room in your home.



1. Insert the DigiConnector™ into the SCART socket labelled 'TV' or 'OUT' on your source equipment (Satellite, Freeview, DVD, VCR, etc.) and plug the SCART cable leading to your TV into the back of it.



2. Ensure that the A/V Channel switch on the back of the DG180-S Transmitter is set to 1.



3. Connect the IR Emitter to the socket labelled IR on the back of the DG180-S Transmitter.



4. Position the IR emitter on or in front of your source equipment (Satellite, Freeview, DVD, VCR, etc.) with the LED facing toward the equipments remote control pick up point.

continued...

Important Note: Avoid positioning the DG180-S Transmitter near to other wireless devices operating on 2.4GHz. These can include Wireless Routers, Laptops, Games Consoles, DECT Phones or Bluetooth devices.



Connect the Power Supply Unit (PSU) to the socket labelled 'PSU' on the DG180-S Transmitter.



Connect the Power Supply Unit (PSU) to an available mains socket.

What's the A/B switch for??

The Contrast (A/B) switch is present to compensate for differences in equipment set-ups.

Once installation is complete, if you experience a poor picture try adjusting the A/B setting.



STEP 3

Install the xSender™ Receiver

The xSender™ Receiver will pick up the signals being sent by your xSender™ Transmitter and output them to a connected TV.



1. Locate a vacant SCART socket on the back of your receiving TV and insert the DigiSender® SCART cable.



2. Ensure that the A/V Channel switch on the back of the DG180-S Receiver is set to 1.



3. Connect the Power Supply Unit (PSU) to the socket labelled 'PSU' on the DG180-S Receiver.



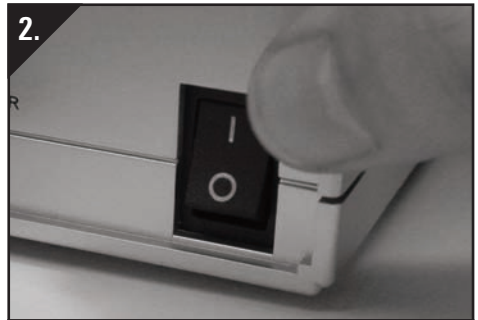
4. Connect the Power Supply Unit (PSU) to an available mains socket.

STEP 4

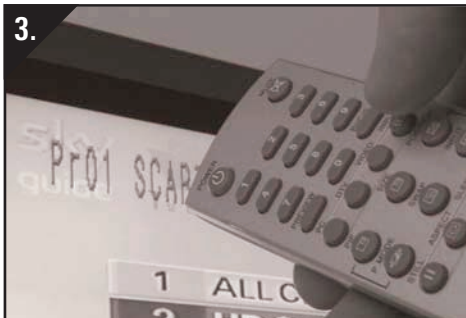
Using the xSender™



Switch on the source equipment (Satellite, Freeview, DVD, VCR, etc.).



Switch on the xSender™ Transmitter and Receiver at the rear of the units.



On the receiving TV, select the SCART channel assigned to the SCART socket that you plugged the DG180-S Receiver in to. This may be labelled as SCART, AUX, AV, VIDEO, VCR or .



To control your source equipment, use its original remote control i.e. your Satellite remote, Freeview remote, DVD remote, VCR remote, etc., while pointing it at the xSender™ Receiver.

A/V Channel Settings

The xSender™ features 4 Audio/Video Channels. Each of these A/V Channels changes the frequency on which the xSender™ operates and is useful for when other wireless devices are present in your home. Because the A/V Channel switch allows you to 'fine tune' the frequency on which your xSender™ operates, it is possible to overcome most interference and reception troubles that may occur.

For your xSender™ to function correctly it is very important that the A/V Channel is set the same on both the Transmitter and Receiver.

TROUBLESHOOTING

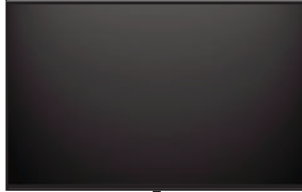
Picture Problems

Q: What do you see on your second television?

The picture is present but poor quality



I see black or blank screen



POOR RANGE

1. The picture & sound quality is affected by the transmitter and receiver's location. Try positioning them in different locations. The transmitter and receiver must be connected to a mains extension lead that can be moved.
2. Try the 3 other available channels ensuring that the audio/video channel is set to the same on both the transmitter and receiver
3. Ensure the units are within the usable range, normally this would be 40m when passing through 2 average internal walls. Thicker or stone/granite walls may lower the usable range of this device.

Switch OFF your DigiSender® TRANSMITTER
What do you now see at the second TV?

I still see a Black Screen...

WRONG AV CHANNEL SELECTED

1. Switch the transmitter back on.
2. Ensure the correct SCART channel is selected on your second television. Some televisions feature multiple AV channels for one or more SCART, phono and S-Video inputs.
3. If available try another SCART socket on the remote television

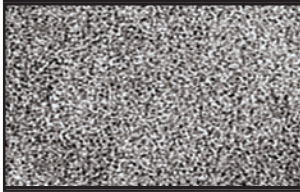
I now see a snowstorm or blue screen...

RECEIVING BLANK SIGNAL

1. Switch the transmitter on.
2. Ensure the transmitter is connected to your source device.
3. Ensure that the source equipment is switched on (such as your satellite or freeview box)

cont...

I see a snowstorm effect or plain blue screen



I see lines over the picture



Switch OFF your DigiSender® RECEIVER.
Q: What do you now see at the second TV?


I now see a Black screen

NOT RECEIVING SIGNAL

1. Switch the DigiSender® Receiver back on
2. Ensure the DigiSender® Transmitter is switched on
3. Select a different audio/video channel ensuring an identical channel is chosen on both the transmitter and receiver
4. Switch off any wireless cameras and/or networks in your household.

I still see a snowstorm or blue picture

WRONG TV CHANNEL SELECTED

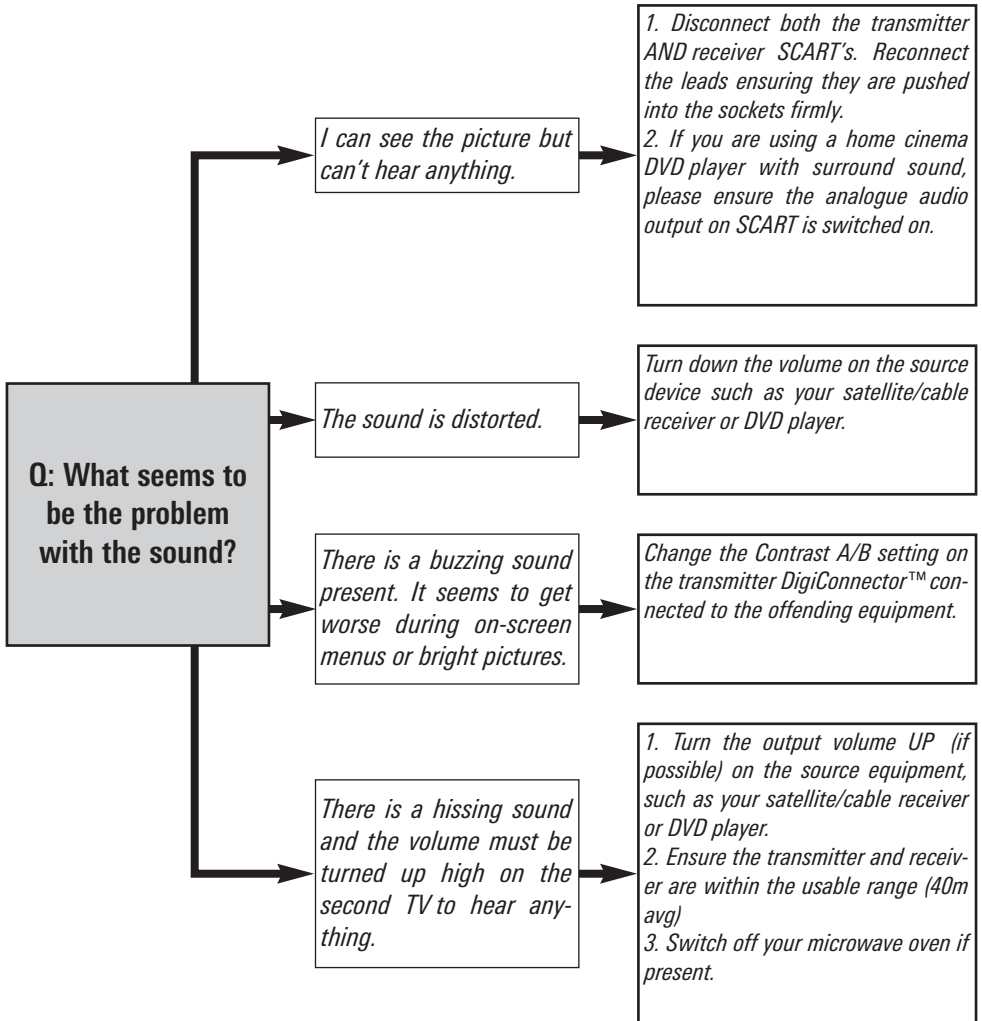
This indicates the SCART Channel has NOT been selected on the second television. Look for buttons on this television's remote control which could select the AV Channel such as EXT, AV, VIDEO, VCR, AUX, Channel 0 AND  .

INTERFERENCE

This indicates one or more electrical devices are interfering with the DigiSender®. To ascertain the source of the interference, switch OFF any wireless networking equipment, laptops, 2.4GHz DECT phones, games consoles or bluetooth devices. Try all 4 audio/video channels as one or more may still be available. Visit digisender.net or contact our helpline for information on configuring your equipment to work together.

TROUBLESHOOTING

Audio Problems



TROUBLESHOOTING

Problems Controlling the Source Equipment

If you have any difficulty operating your source equipment remote control in your second room please follow the advice below below:

- 1) Ensure the IR Emitter is connected to the socket labelled 'IR' on the xSender™ Transmitter.
- 2) Ensure you are using the correct remote control in the second room. For instance, if you are trying to control your Satellite Receiver you will need to use the Satellite remote control.
- 3) Ensure the IR Emitter is facing the Infra Red remote control pick up point on your source equipment.
- 4) Move the IR Emitter further away from the source equipment.
- 5) Move the xSender™ Transmitter AND xSender™ Receiver further away from other electrical devices.
- 6) Try operating your source remote control closer to the xSender™ Receiver.
- 7) Replace the batteries in your source remote control.



Technical Support

AEI Security & Communications Ltd is dedicated to providing our customers with first class customer care and technical support.

We have provided you with 2 methods of obtaining technical advice on this product.

During busy periods we would suggest using the web option to obtain support.

1. On the web...

Free technical advice is available online 24/7 at our dedicated support web site:

<http://www.aei.eu>

2. By telephone...

We have a dedicated helpline, Monday to Friday, 9AM - 5PM.

Please note that calls are charged at the local rate and your call may be recorded for training purposes.

**UK Customers only:
0845 166 7940**

**Overseas Customers:
+44 (0) 1797 226123**

Upgrades & Accessories



Additional Receiver - Part DG20RX

- Get your Satellite channels to additional TV's in your home!
- Add as many Receivers as you require to your DigiSender® system
- Connect to any SCART enabled TV or use with the MOD01PIS Aerial Converter
- Supplied with Power Supply Unit
- Requires DigiSender® Transmitter



Aerial Converter - Part MOD01PIS

- Connect a DigiSender® Receiver to an aerial socket on your TV
- Shares the power supply with your DigiSender®
- Test Card signal for easy set up
- Compatible with every UK television
- Adds the DigiSender® signal to your existing aerial signal

<http://www.digisender.net>

for the latest info, upgrades and technical support

REAR PANEL DESCRIPTIONS

xSender™ Transmitter

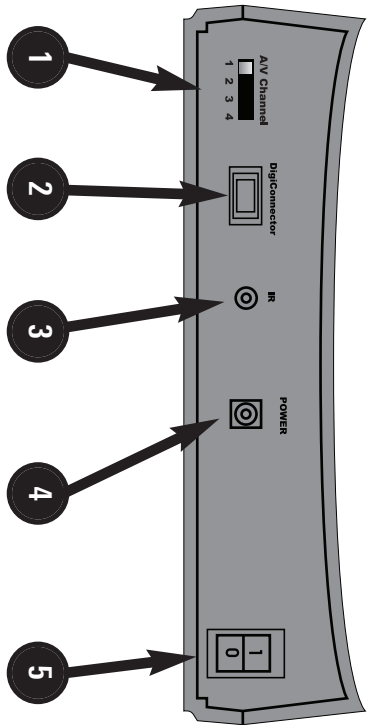


Figure 6.1 xSender DG180-S Transmitter

1. Audio/Video Channel

Default: Channel 1

See Advanced Section for details.

2. DigiConnector

Connect your satellite or cable here.

3. IR Emitter Output

Connect the supplied IR Emitter here.

4. Power Supply

Connect one of the supplied power Supply Adaptors here

5. Power Switch (0/1)

Used to switch ON and OFF your DigiSender transmitter.

REAR PANEL DESCRIPTIONS

xSender™ Receiver

- 1. Audio/Video Channel**
Default: Channel 1
See Advanced Section for details.
- 2. SCART Out**
Use this lead to connect to an available SCART input on your remote television.
- 3. Power Supply**
Connect one of the supplied power supply adaptors here.
- 4. Power Switch (0/1)**
Use this to switch your xSender™ receiver ON or OFF.

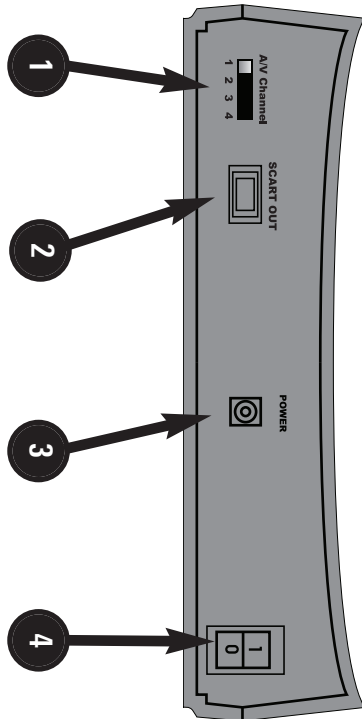


Figure 7.1 xSender DG180-S Receiver

Notes

We,

AEI Security & Communications Ltd

Weslake Industrial Park, Harbour Road, Rye, East Sussex TN31 7TE, United Kingdom.

declare under our sole responsibility that the products referred to as DigiSender, XSender and PlugSender bearing the series codes prefixed:

DX_x, DG_x, DV_x (*x refers to the specific model number*)

are in conformity with the essential requirements of Directive 1995/5/EC. These products have been tested against the following standards and specifications:

Low Voltage Directive

EN60950:2000

Safety of information technology equipment

Electromagnetic Compatibility Directive

EN 301 489-3 V1.3.1: 11-2001

Specific conditions for Short-Range Devices (SRD) operating on frequencies between 9 kHz and 40 GHz

EN 301 489-1 V1.3.1: 09-2001

Electromagnetic compatibility and Radio spectrum Matters (ERM); ElectroMagnetic Compatibility (EMC) standard for radio equipment and services; Part 1: Common technical requirements

Radio spectrum

EN 300 440-1 V1.1.1: 09-2001

Electromagnetic compatibility and Radio spectrum Matters (ERM); Short range devices; Radio equipment to be used in the 1 GHz to 40 GHz frequency range; Part 1: Technical characteristics and test methods

Power Supply

EN55022: 2003

Information technology equipment. Radio disturbance characteristics. Limits and methods of measurement

EN55024: 2003

Information technology equipment. Immunity characteristics. Limits and methods of measurement

IEC 61000-3-2: 2001

Electromagnetic compatibility (EMC) - Part 3-2: Limits - Limits for harmonic current emissions (equipment input current ≤ 16 A per phase)

IEC 61000-3-3:2001

Electromagnetic compatibility (EMC) - Part 3-3: Limits - Limitation of voltage changes, voltage fluctuations and flicker in public low-voltage supply systems, for equipment with rated current ≤ 16 A per phase and not subject to conditional connection

The product is marked with the CE marking and Notified Body Number according to directive 1999/5/EC



NOTE: Original DoC has been signed

SPECIFICATIONS

Transmitter :

Remote Relay Receiver	433.92MHz
Audio/Video Frequency	2.4000GHz ~ 2.4835GHz
Channel Frequency	2.414GHz - 2.468GHz
Modulation	FM
Video Input Level	1V PP/75Ω
Colour Video Input	Phase Alternate Line (PAL)
Audio Input Level	1.0v PP (Mod 1KHz, Dev 15KHz)
Audio Bandwidth	10Hz - 22KHz (-1dB)
Input Connectors	DigiConnector™ SCART
Power Source	DC 9V 300mA Typical

Receiver :

Remote Relay Transmitter	433.92MHz
Audio/Video Frequency	2.4000GHz ~ 2.4835GHz
Modulation	FM
Video Output Level	1V PP/75Ω
Sensitivity	-90dBm
Audio Output Level	1.0V PP (Mod 1KHz, Dev 15KHz)
Audio Bandwidth	10Hz - 22KHz (-1dB)
Output Connectors	Euro SCART
Power Source	DC 9V 300mA Typical)

©2009 AEI Security & Communications Ltd. All rights reserved.

Registered in England: 02831823

AEI Security & Communications Ltd
Weslake Industrial Park
Rye Harbour Road, Rye
East Sussex
TN31 7TE
United Kingdom

xSender and DigiConnector are trademarks of AEI Security & Communications Ltd.
DigiSender is a registered trademark of AEI Security & Communications Ltd.